



HEALTHY  
HOME  
BUWIT

Unique  
residences  
in Buwit

# Healthy Home is a space **where the harmony of nature** blends seamlessly with modern **comfort.**

**It's more than just a place to live  
– it's your choice for health,  
longevity, and harmony with  
yourself.**

The infrastructure includes sports  
and recovery areas, a SPA, and many other  
facilities designed to support the residents'  
physical and mental well-being.

The Healthy Home technology, developed by  
us based on scientific research, ensures the  
creation of units designed according to  
principles that promote longevity.







## Key points

📍 Location

# Buwit

📏 Total Area

# 42 are

4200 m<sup>2</sup>

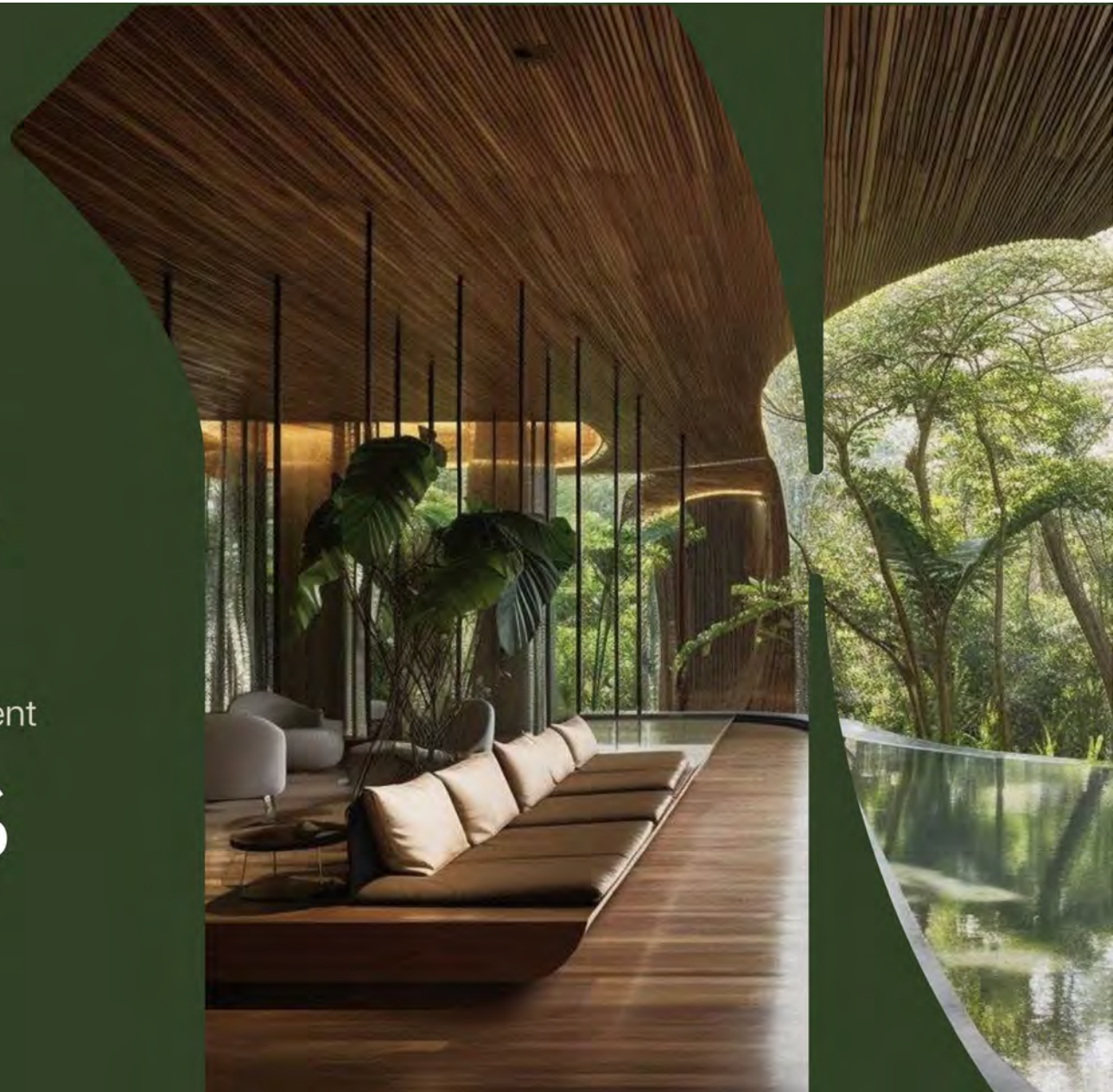
⚖️ Leasehold

# 40 years

⚖️ Land payment

# 100%

\*with the option to extend for  
an additional 10 years at a fixed price







**HEALTHY  
HOME**  
BUWIT

# Analytics



# Indonesia: stability and growth, an **emerging powerhouse** in global economics.

-  High GDP: Indonesia's economy has consistently grown by approximately 5% annually for the last 20 years
-  At the heart of Southeast Asia's prime economic growth
-  Low inflation
-  Abundant prosperity: rich in natural resources
-  Political stability and safety
-  Passive income in a stable currency (\$)





# Why investors choose Bali?

**10-12%**

Rental property yield. Depends on location and housing quality.

**300%**

Land value growth in Bali over the last 5 years.

**70-80%**

Property occupancy rate. The season lasts 365 days a year. More than 320 sunny days.

**30%**

Property value growth at the completion stage of construction.











**HEALTHY  
HOME**  
BUWIT

# Concept





# Location



10 minutes from  
Seseh Beach



1.5 hours is all it takes to reach  
the international airport



12 minutes from Canggu



**HEALTHY  
HOME**  
BUWIT

Selemadeg

Badjera

Krambitan

Tabanan

Mengwi

Br. Kengetan

Gianyar

Cemara  
Semar

SANGEH

KANGIN

Убуд  
Ubud

PERING

LABIH

Sukawati

SESEH

SEMPIDI

Dalung

BANJAR

NGEREBONG

Denpasar

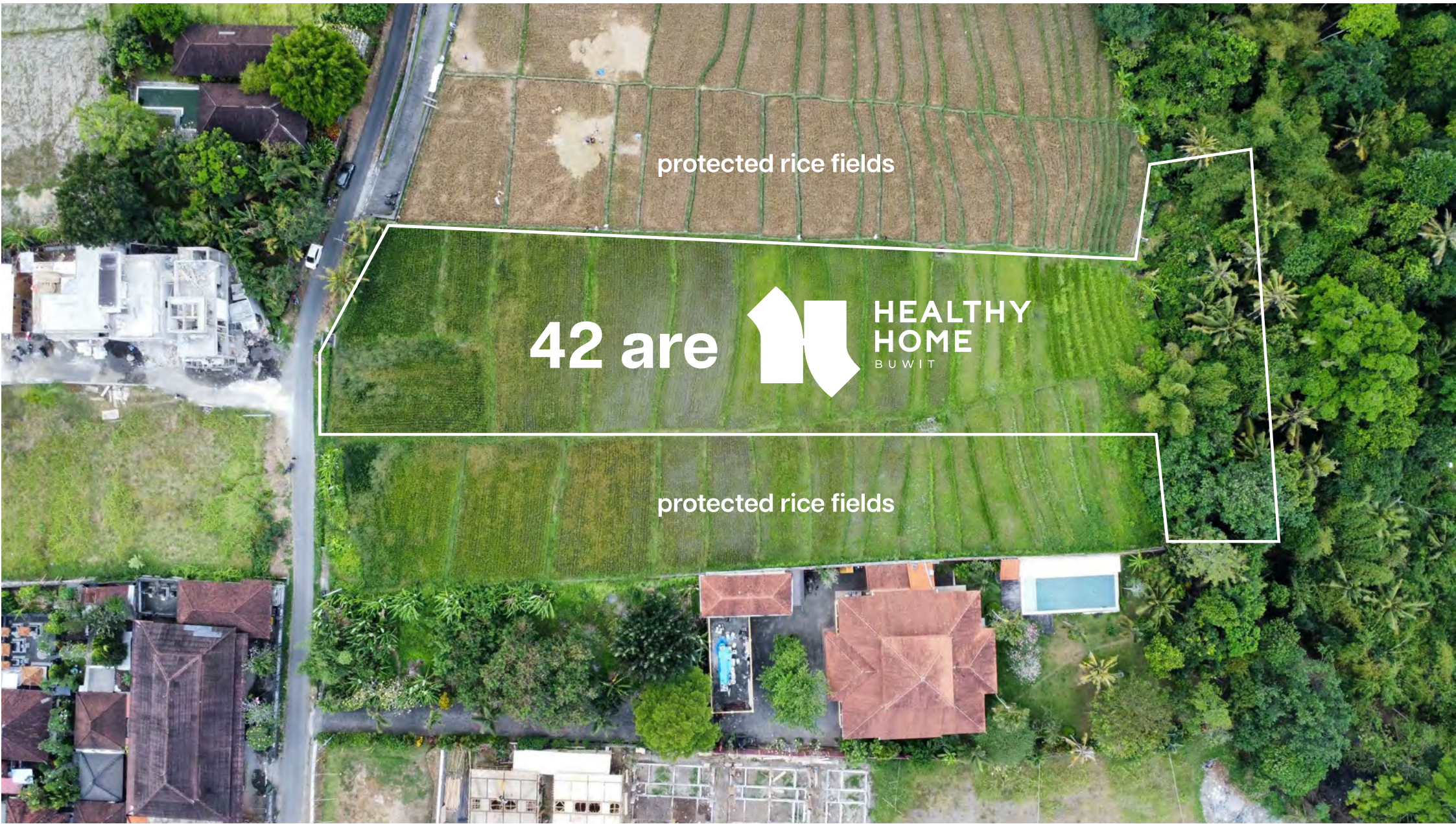
Kuta

Pesanggaran

Kuta Selatan

CENGILING





protected rice fields

42 are



HEALTHY  
HOME  
BUWIT

protected rice fields







Pool in each villa

3-BR villas

number: 7    area: 150 m<sup>2</sup>

2-BR villas

number: 2    area: 124 m<sup>2</sup>

1-BR apartments

number: 10    area: 40 m<sup>2</sup>

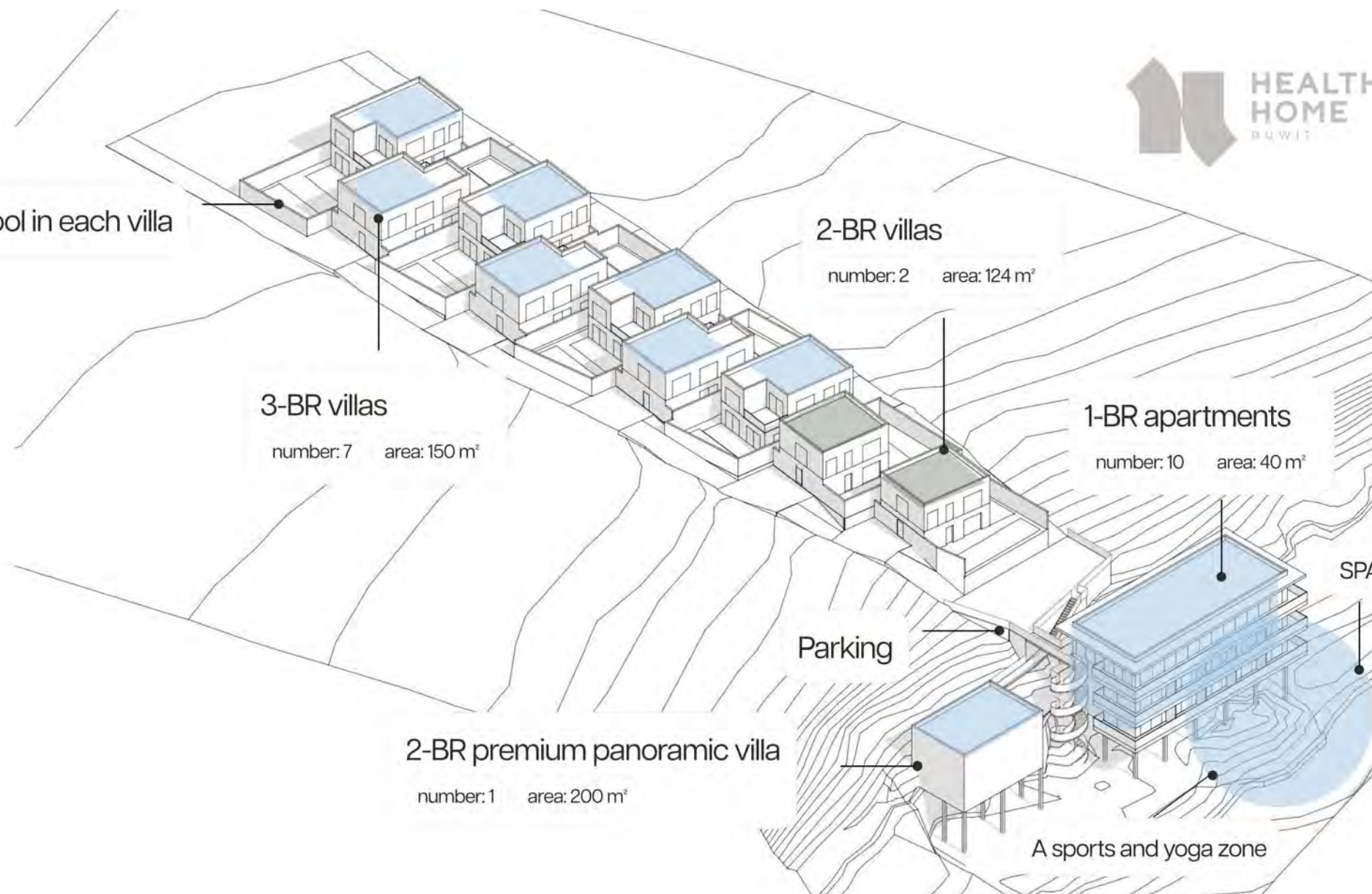
2-BR premium panoramic villa

number: 1    area: 200 m<sup>2</sup>

Parking

SPA

A sports and yoga zone





# Facade concept of Healthy Home



Inspired by the contrast of the dark shades of soil and greenery, we have created a facade that harmoniously blends with nature.

The first floor is clad in volcanic stone – a symbol of Balinese traditions, known for its strength, thermal regulation, and resistance to the humid climate. The second floor is finished with dark brown plaster, reflecting the natural tones of the soil and emphasizing the connection to organic materials. Its surface will feature embedded bas-reliefs with floral motifs, enhancing the natural aesthetic.

Large panoramic windows offer a view of the greenery, filling the house with light and seamlessly integrating it with the surrounding landscape.

**Such a facade makes the house a part of nature, combining comfort, sustainability, and respect for tradition.**

















# 3-BR villas

Area:

**150** m<sup>2</sup>

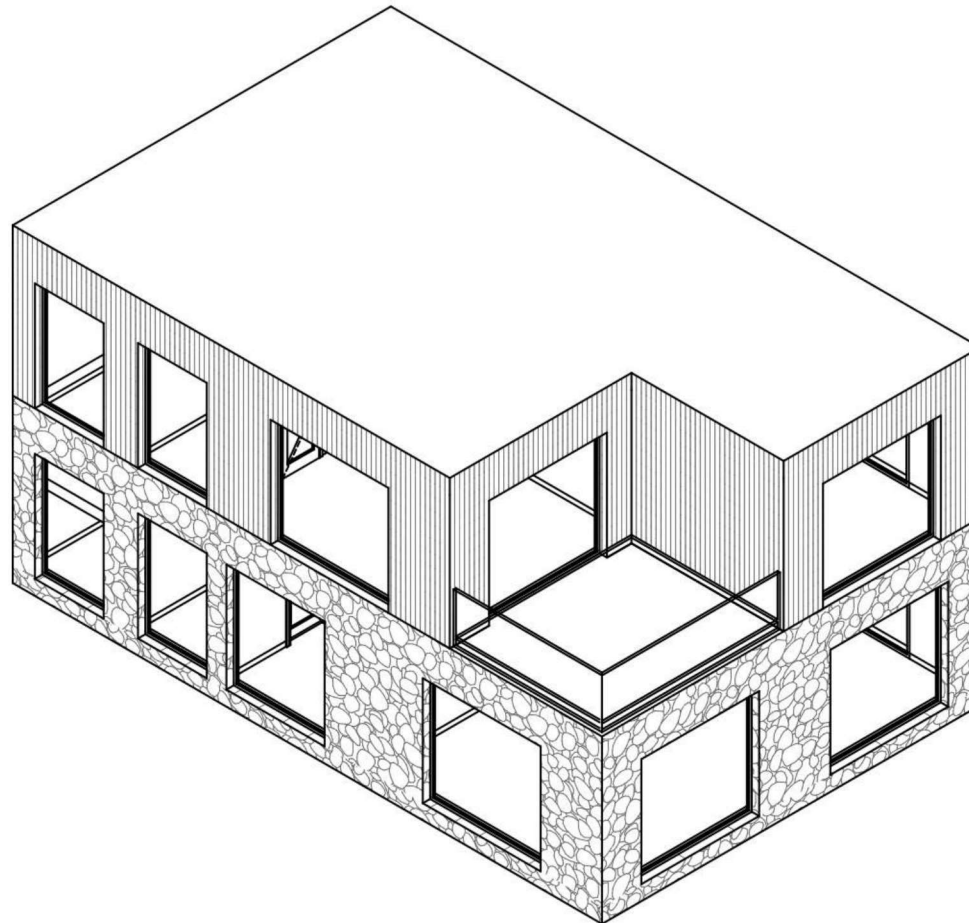
Cost at the start of construction:

**\$**





## 3-BR Villa Layout Option



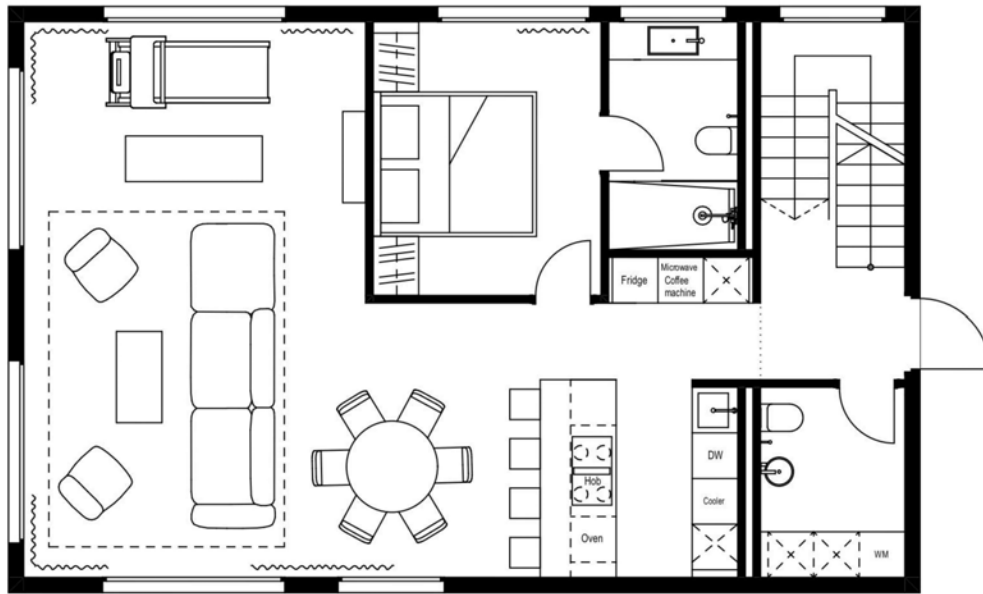
Villa 1

V1

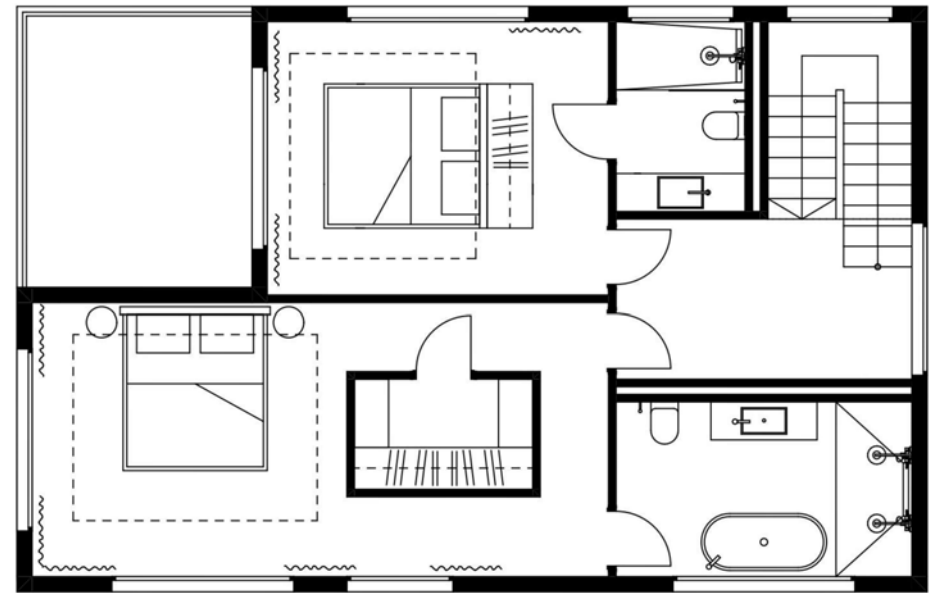
Number	Name	Area
01	Hall	8,9
02	WC	4,8
03	Living+kitchen	51,9
04	Bedroom	10,8
05	WC	5,1
06	Hall	8,2
07	WC	9,0
08	Dressing room	3,4
09	Bedroom	23,2
10	Bedroom	16,2
11	WC	4,3
12	Terrace	10,6
		<b>156,4 m<sup>2</sup></b>



the first floor



the second floor





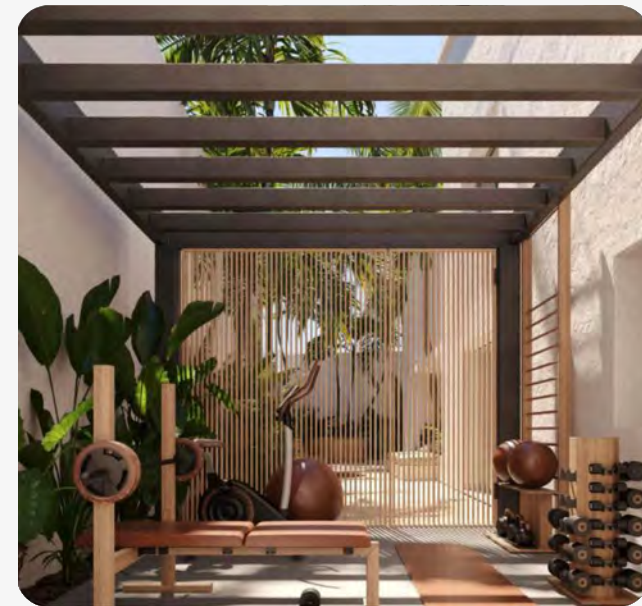
# 2-BR villas

Area:

**124** m<sup>2</sup>

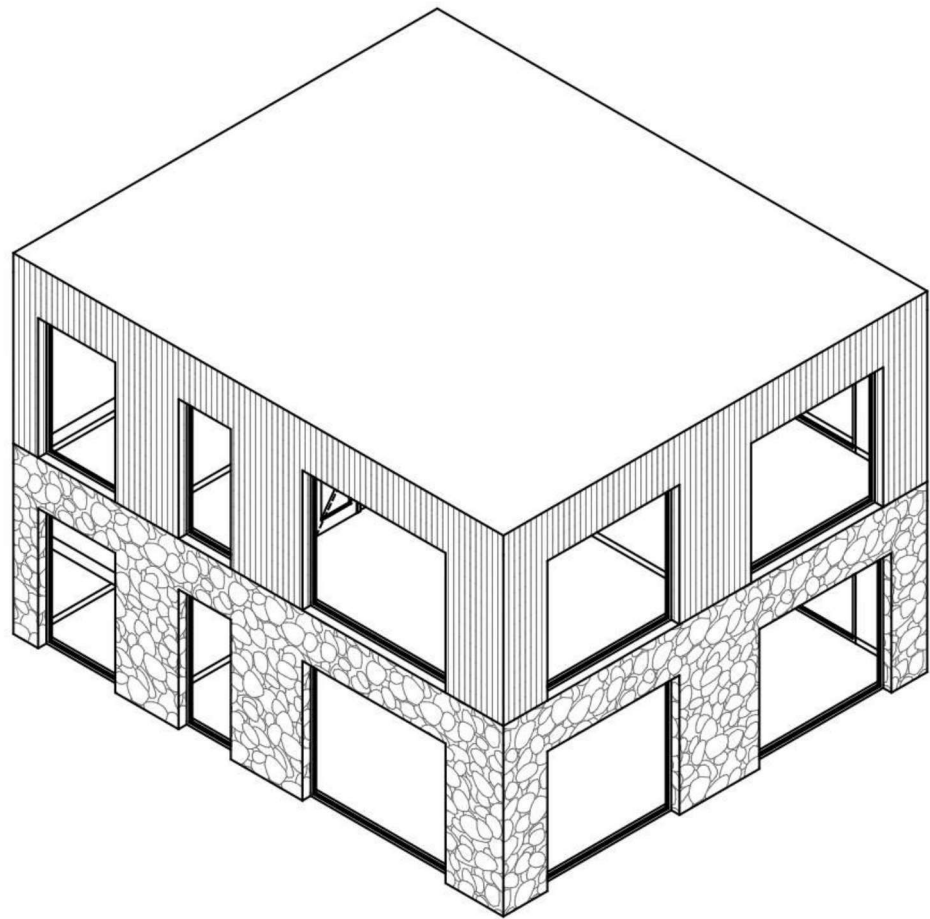
Cost at the start of construction:

**\$**





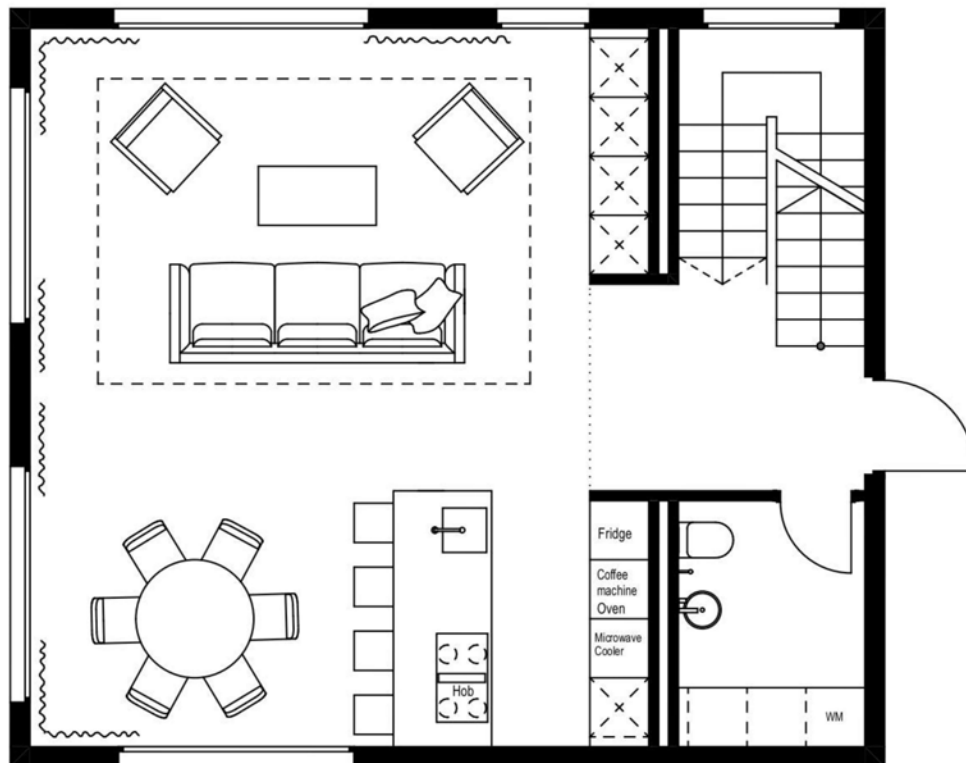
# 2-BR Villa Layout Option



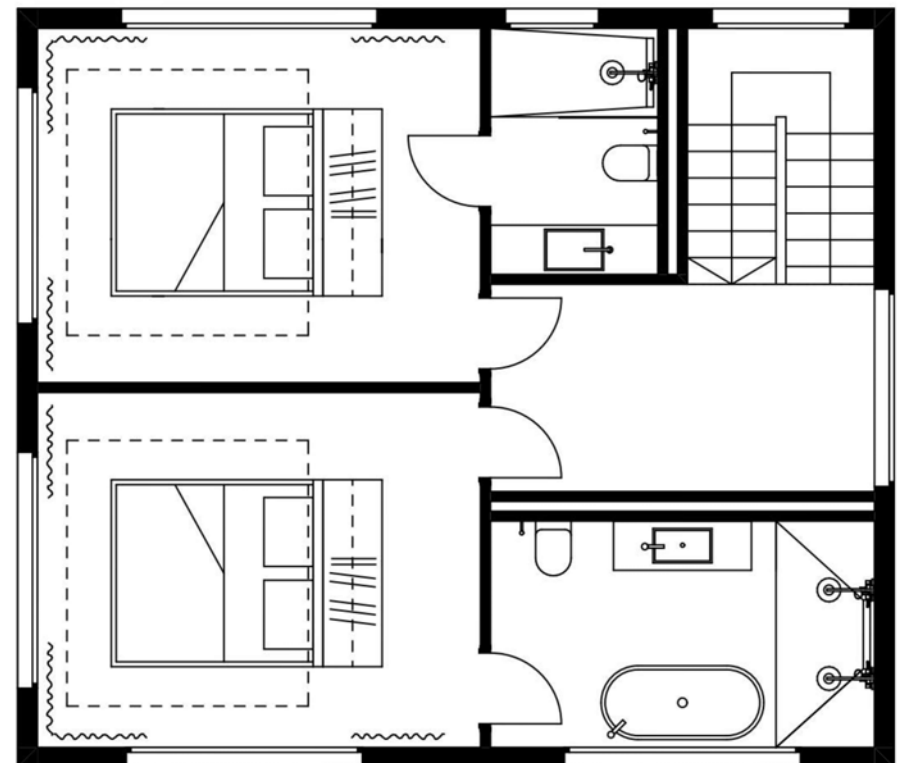
Villa 2		V1
Number	Name	Area
01	Hall	10,8
02	WC	4,8
03	Living+Kitchen	44,6
04	Hall	8,2
05	WC	9,0
06	Bedroom	16,2
07	Bedroom	16,2
08	WC	4,3
		114,1 m <sup>2</sup>



the first floor

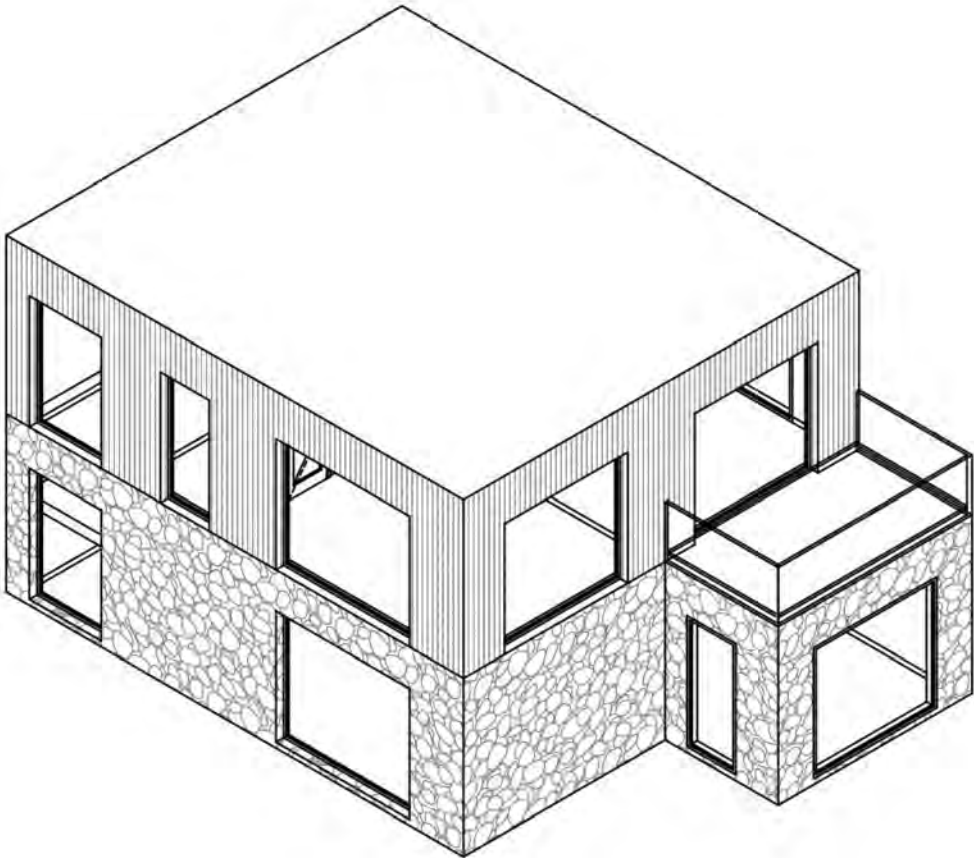


the second floor





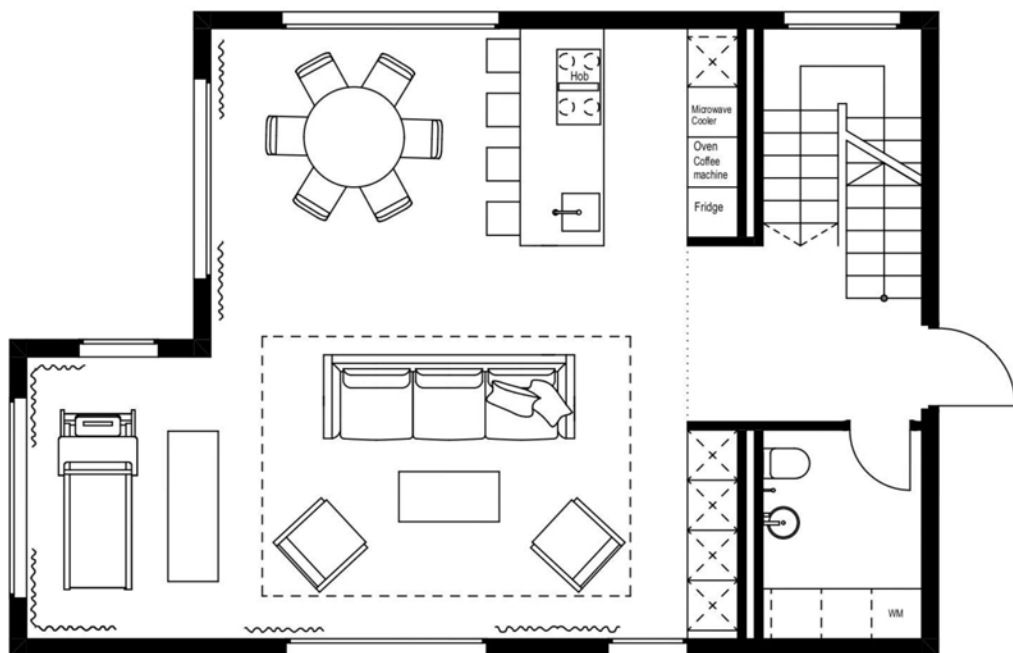
# 2-BR Villa Layout Option



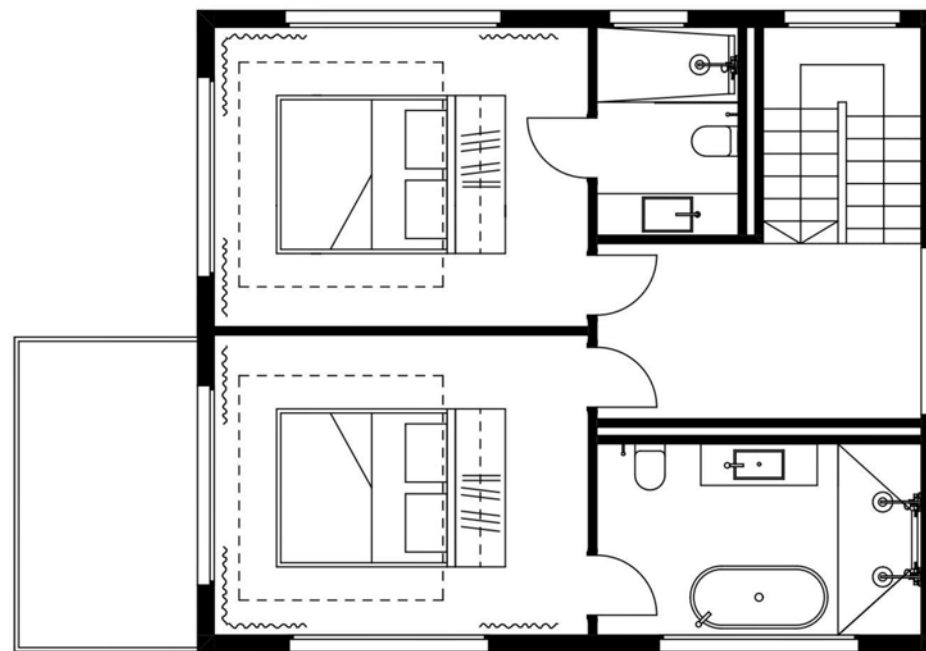
Villa 2		V2
Number	Name	Area
01	Hall	10,8
02	WC	4,8
03	Living+Kitchen	52,0
04	Hall	8,2
05	WC	9,0
06	Bedroom	16,2
07	Bedroom	16,2
08	WC	4,3
09	Terrace	7,9
		<b>129,4 m<sup>2</sup></b>



the first floor



the second floor





# 1-BR apartments

Area:

**40** m<sup>2</sup>

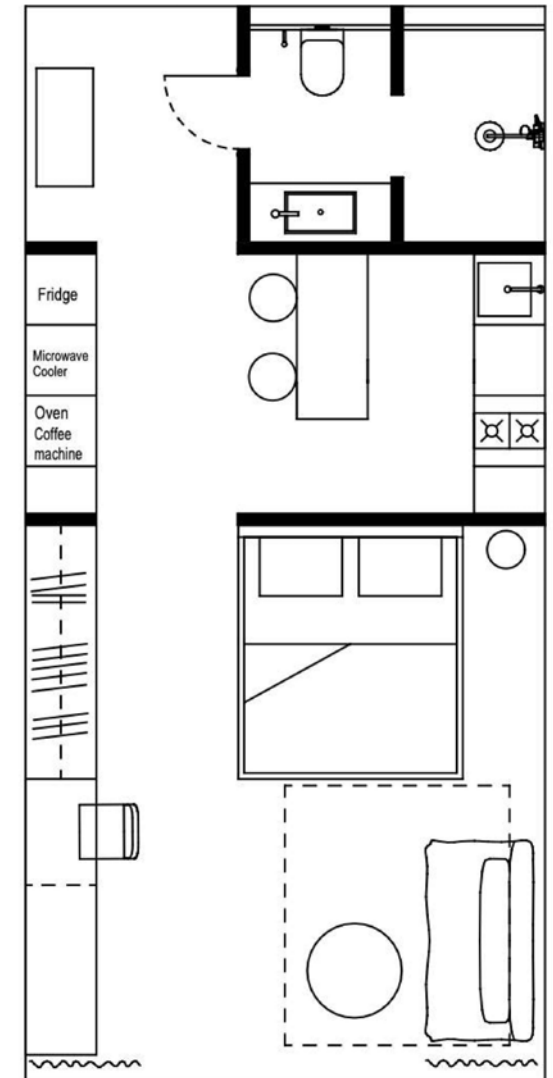
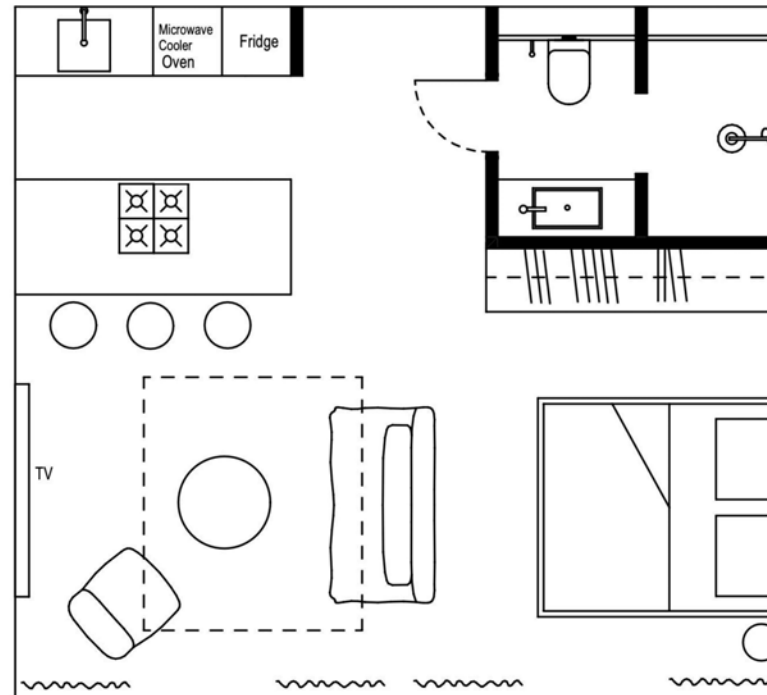
Cost at the start of construction:

**\$**





# 1-BR Apartment Layout Option





# Premium panoramic villa

Area:

**200** m<sup>2</sup>

Cost at the start of construction:

**\$**

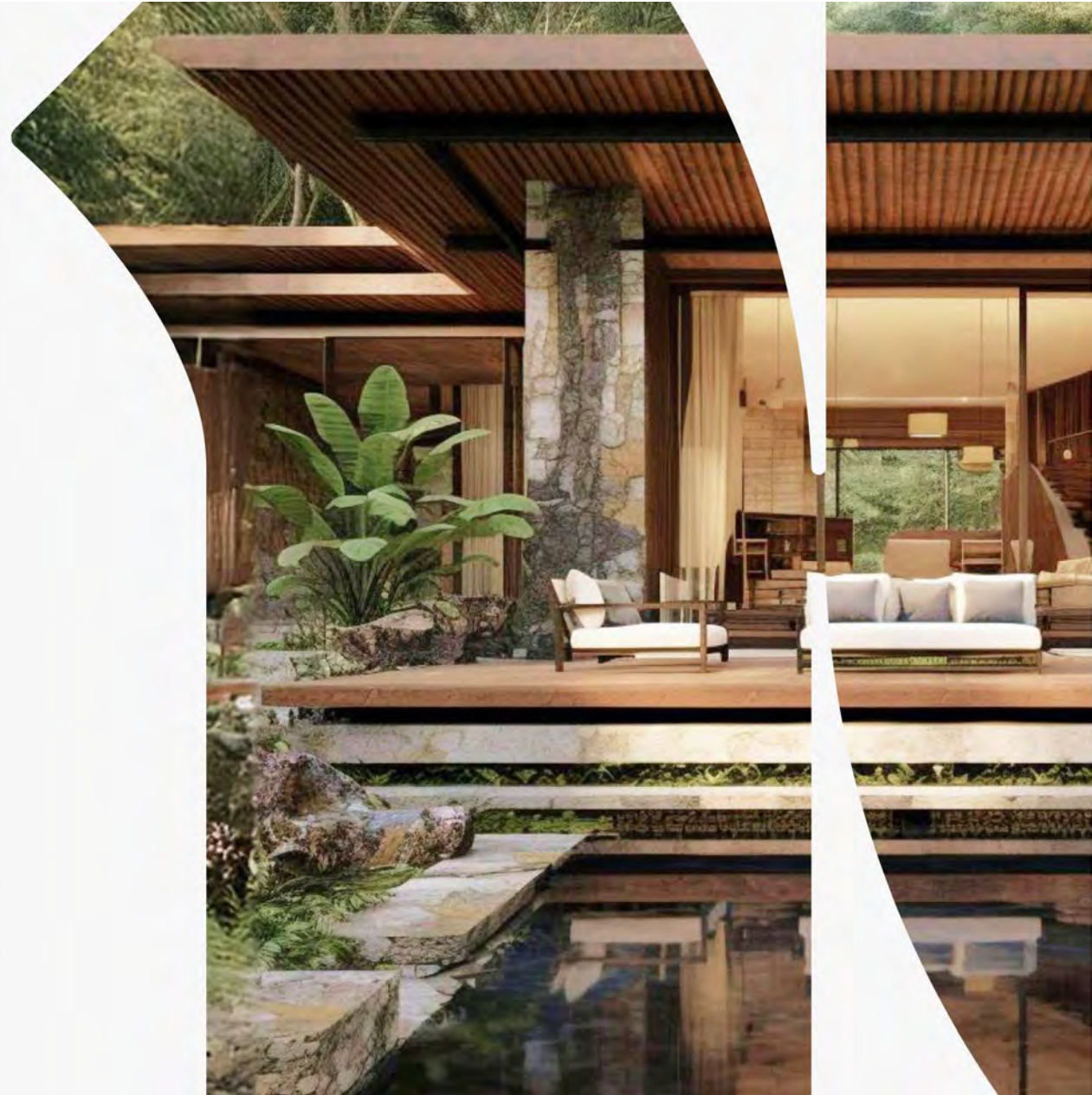




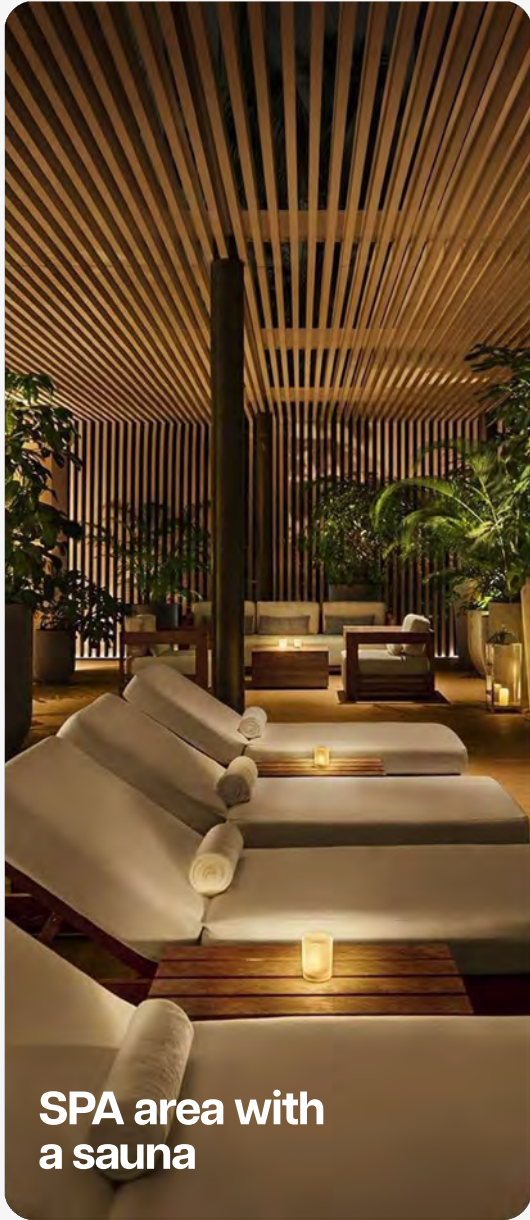


**HEALTHY  
HOME**  
BUWIT

# Infrastructure and principles of Healthy Home



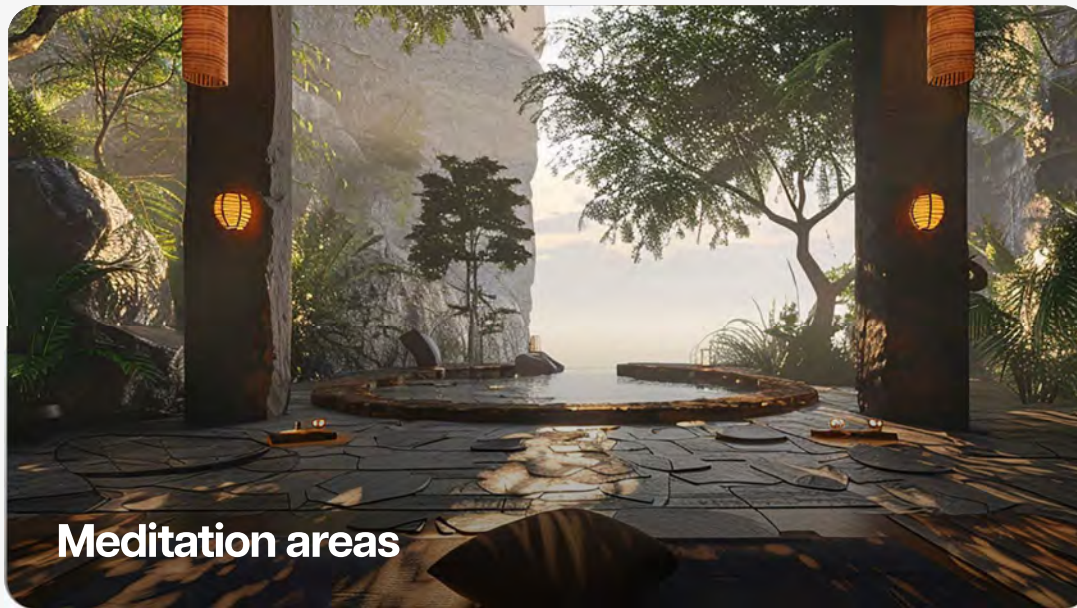




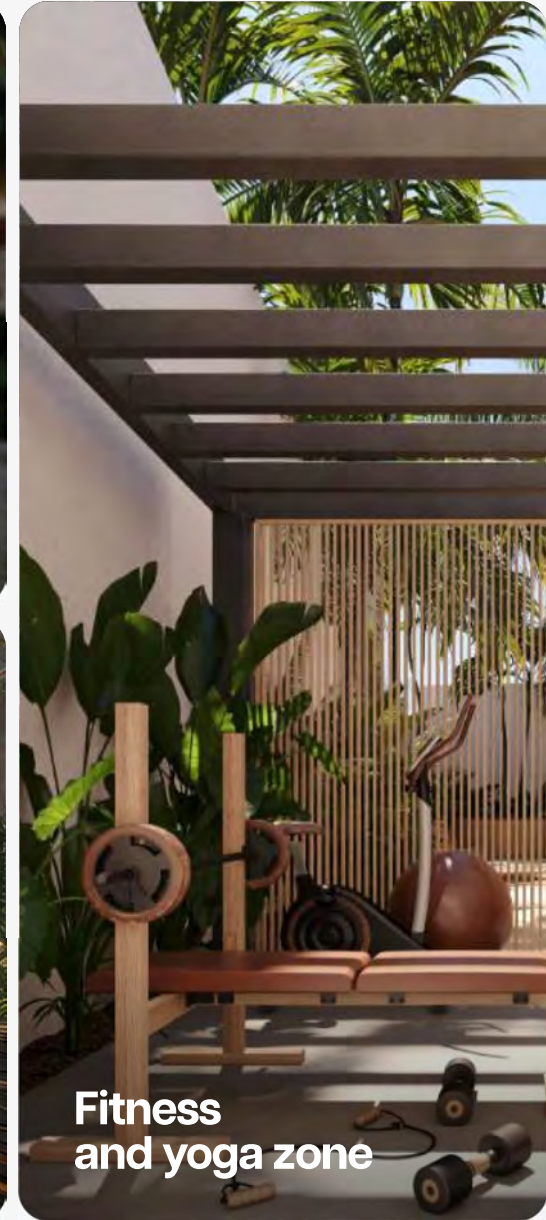
**SPA area with  
a sauna**



**Security and safety**



**Meditation areas**

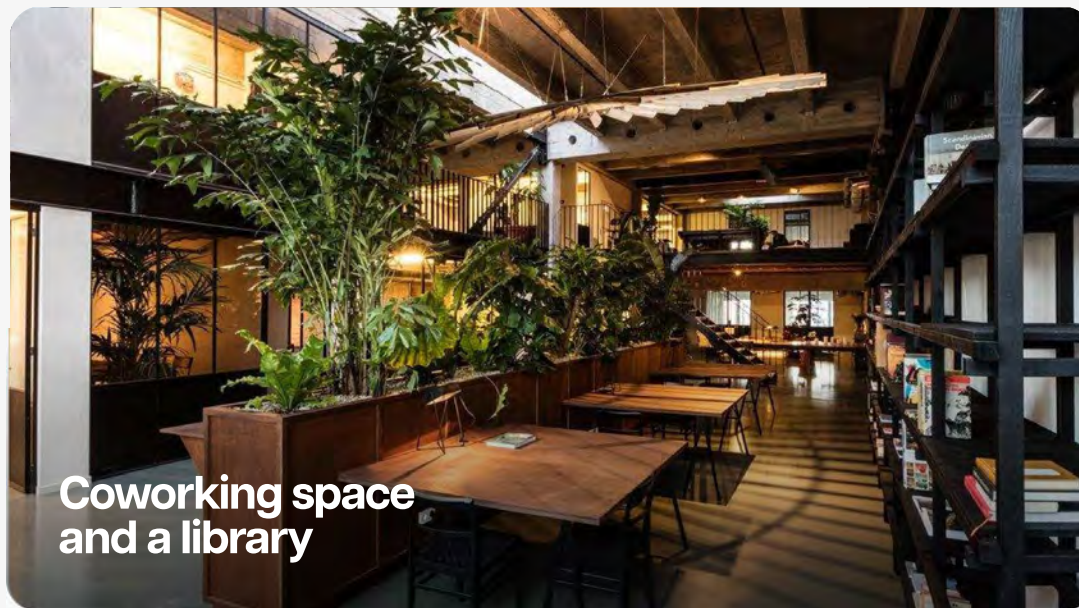


**Fitness  
and yoga zone**

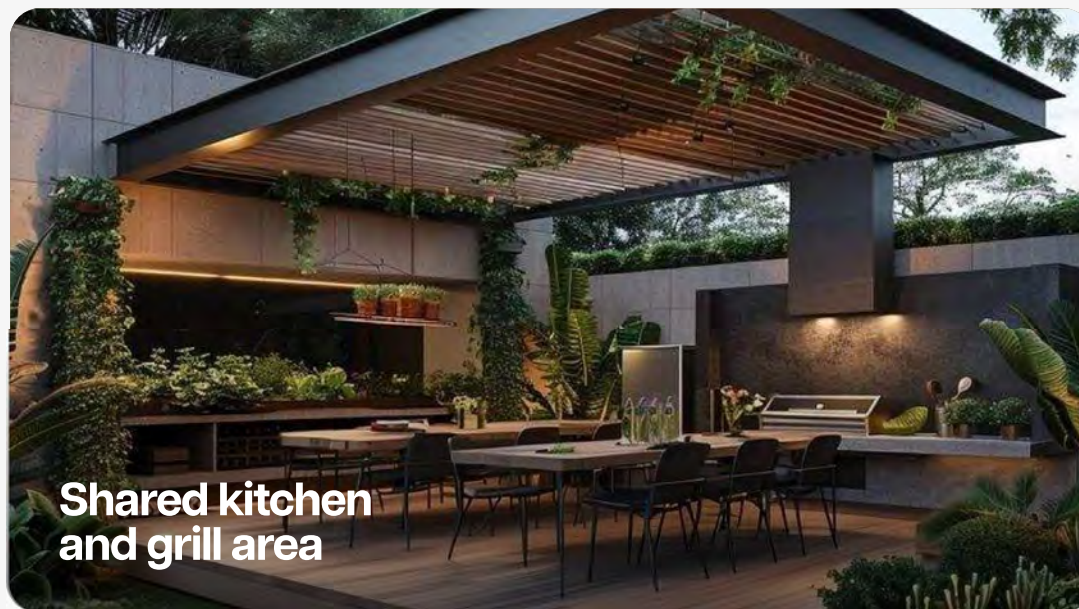




**Smart climate  
control systems**



**Coworking space  
and a library**



**Shared kitchen  
and grill area**



**Organic garden**



## Use of natural, healthy building materials

like wood, stone, bamboo, and VOC-free paints and finishes

## Sound control

Utilizing noise insulation and audio systems to create a comfortable acoustic environment.

## Air and water filtration system

Air quality control system. Advanced filtration systems for clean, pollutant-free air and purified drinking water, ensuring a healthy indoor environment.

## Temperature control

Thermoregulation using energy efficient air conditioners and heaters to maintain a comfortable microclimate.



## Maximizing natural light

Large windows and a proper room layout to help improve circadian rhythms. Installation of smart lighting systems.

## Smart beds

with sleep tracking features. High-quality, temperature-controlled mattresses.

## Biophilic design

Integration of nature into the design with indoor plants, green walls, nature landscaping, water features, and open garden spaces that create a direct connection to the natural environment, improve air quality and aesthetics.



